

## Mossyrock Blueberry Festival Fun:



ARTrails artists volunteered their time this year at the Blueberry Festival in Mossyrock, WA. Fun painting and drawing activities for young artists.

## Open Studio Tour and Gala Reception

Now is the time to make plans for ARTrails 2019 Annual Studio Tour.

ARTrails is working with other arts and community organizations to make your 2018 visit even better. We will be adding other events and "happenings" as we get closer to September.

Make your plans now to spend a delightful fall weekend driving through the region's historic communities and meandering along back roads while enjoying wonderful art, Talking to the artists and watching them at work in their studios. See how and where the artists work find your favorite pieces of art and discover Southwest Washington.

The 2019 tour will open with the Gala Reception on September 20th, at the Exhibition Gallery in downtown Centralia's Historic Train Depot (210 Railroad Avenue, Centralia WA).

The Tour Dates

September 21-22 & 28-29



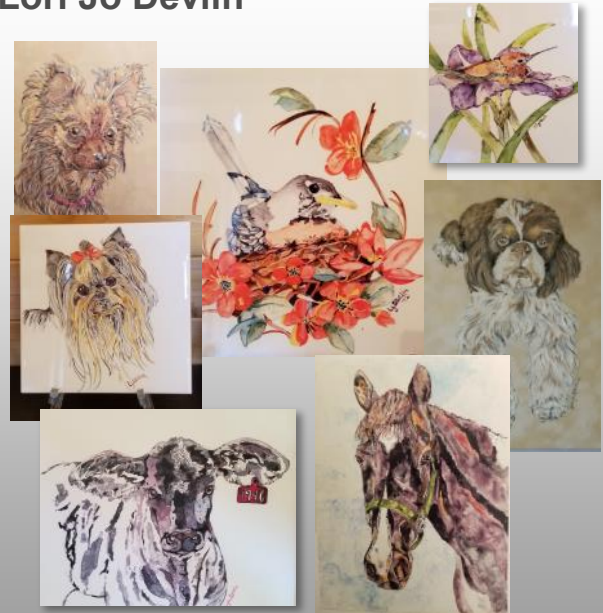
# Members Spotlight

Wood Carving  
Tamara Hinck



minihorseteacher@exede.net  
Studio # 5

Mixed Media  
Lori Jo Devlin



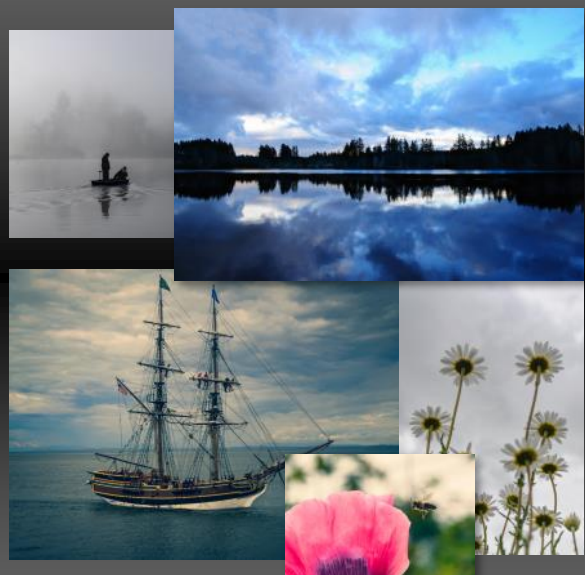
www.facebook.com/Loris-Art-from-my-heart-1537505166479500  
Studio # 2

Stained Glass  
Marcy Anholt



www.stainedglassbymarcy.com  
mmanholt@yahoo.com  
Studio # 10

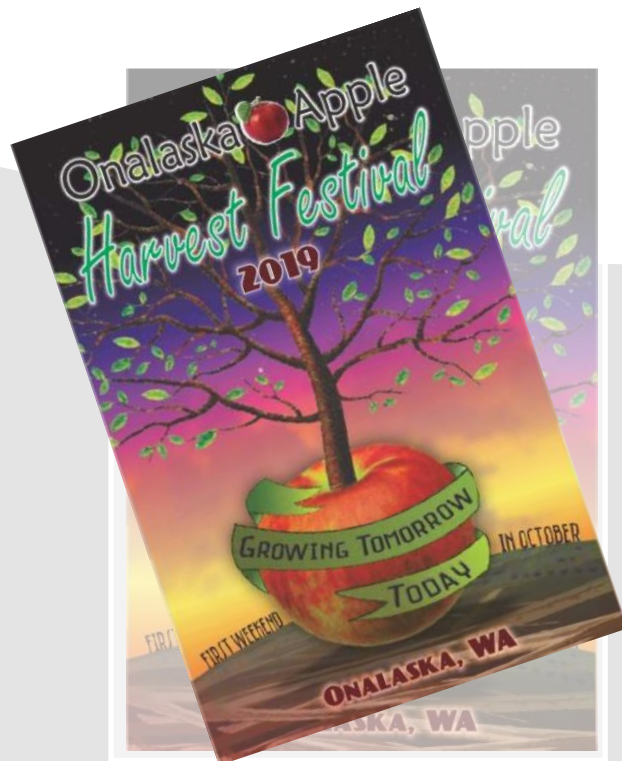
Photography  
Madeline McLintire



www.bearfootcreative.net  
Studio # 8



## Upcoming Events:



## Where to find ARTrails artists:

Marcy Anholt **R**

Judi Colwell **O**

Stuart Dittbrenner  
**T B R A F**

Eileen Edelman **R G**

Bob Espen **R C**

Jeanne Hamilton **R**

Sheryl Harris **S**

Thelma Hauge **G**

Joan Hitchcock **R**

Kit Metlen **R**

Di Morgan **G**

Mike Morgan **G**

Jan Nontell **R**

### Artists In Galleries and Shops

#### **The Wood Merchant**

La Connor, WA (360) 466-4741  
[www.woodmerchant.com](http://www.woodmerchant.com)

#### **Bead Opus**

211 North Tower Avenue Suite B in Centralia, WA  
98591 (360) 736-0481  
[www.beadopus@outlook.com](mailto:www.beadopus@outlook.com)

#### **River Sea Gallery**

1160 Commercial Street, Astoria, OR 97103  
(503) 325-1270  
[www.riverseagallery.squarespace.com](http://www.riverseagallery.squarespace.com)

#### **Alder Grove Gallery**

200 West Market Street in Aberdeen, WA 98520  
(562) 208-4226  
[www.aberdeenartcenter.com](http://www.aberdeenartcenter.com)

#### **Fruffles**

211 North Tower, Suite C in Centralia, WA 98531  
(360)-807-8989  
[www.fruffles.com](http://www.fruffles.com)

#### **Childhoods End Gallery**

222 4th Ave W Olympia, WA 98501  
(360) 943 3724  
[www.childhoods-end-gallery.com](http://www.childhoods-end-gallery.com)

#### **Gallery 505**

205 Cowlitz Street in downtown Toledo, WA  
98591 (360) 864-2789  
<http://www.artgallery505.com>

#### **Olympias Farmers Market**

700 Capitol Way N, 98501  
360) 352-9096  
[www.olympiafarmersmarket.com](http://www.olympiafarmersmarket.com)

#### **Rectangle Gallery & Creative Space**

209 North Tower Ave. in Centralia, WA 98531  
(360)-736-3300  
<http://www.therectanglegallery.com>

#### **State of the Arts Gallery**

500 Washington St. SE Olympia, WA 98501  
(360)-705-0317  
[www.thestateofthearts.com](http://www.thestateofthearts.com)

## Bizz Buzz

### How to Find Your Fave

Date 5 Aug 2019—There are two ways to find your favorite of ARTrail's 42 (five are on sabbatical) artists during the ARTrails 17th Annual Studio Tour. The tour takes place September 21-22 and 28-29.

The first way is to attend the Gala Opening Reception Friday, September 20, 4:00-8:00 p.m. The Gala is held at the Exhibition Gallery in Centralia's Historic Train Depot. Those who attend the Gala will meet the artists and see one item exhibited by each of them. The gallery is open daily from 10 a.m. to 5 p.m. Saturday, September 21 through Sunday, September 29. Though the artists will not be there during the week, you can still see the exhibition and choose your favorites.

The other way is to get a copy of the 2019 Studio Tour Guide. There you will find a list of all 37 participating artists on page 1 with the town, studio number, and the page where they can be found in the Guide. In the Guide's center is a convenient map showing where all the studios are located.

Karen McInturff and JoAnne Watson provide the opportunity for kids to work in their mediums.

## Upcoming Classes

Have you thought about taking an art class taught by local artists?



**Watercolor**  
**Silk Dying**  
**Landscape Painting**  
**Mixed Media**  
**Fiber Workshop**  
**And more**  
**Acrylic Painting**

Like us on Facebook: **ARTrails of SW Washington**  
 Click on events on the left for a full list of upcoming classes.

[www.facebook.com/pg/ARTrails of SW Washington/events/](http://www.facebook.com/pg/ARTrails of SW Washington/events/)

## 2019 ARTrails Artists

Marcy Anholt  
Stain glass

Penney Auld  
Weaving/  
fiber arts

Karla Bailey  
Graphite / Oil

Rosalind Berg  
Mixed Media  
Watercolor

John Brooks  
Ceramics

Michael Cook  
Acrylic Paint-  
ing

Judi Colwell  
Mixed Media Paintings

Lori Devlin  
Mixed Media

Stuart Dittbrenner  
Wood Sculpture/ furniture

Dan Duffy  
Oil Painting

Eileen Eddleman  
Mixed Media

Bob Espen  
Turned Wood

Jeannett Fedorka  
Needle Felting



Photo taken during welcoming meeting at the Rectangle Gallery.

Bryan Perkins  
Charcoal & Pastel

Vernadel Peterson  
Fused Glass

Richard Roth  
Clay

Susan Roth  
Pottery

Paulie Rollins  
Pyrography

Carlene Salazar  
Photography &  
Painting

Ron Gaul  
Coffee/ Watercolor

Jeanne Hamilton  
Painting

Amanda Hanson  
Fiber Art Needle Felting

Sheryl Harris  
Acrylics

Thelma Hauge  
Soft Pastel

Tamara Hinck  
Wood Carving

Joan Hitchcock  
Fiber Art

Madeline McIntire  
Photography

Tonie Knutz  
Cement / Sculpture

Beke Lemke  
Acrylic Mixed Media

Cheryl Love  
Mixed Media

Karen McInturff  
Fiber Art

Kit Metlen  
Wood

Di Morgan  
Fiber & Wearables

Mike Morgan  
Mixed Media Sculpture  
Candy Nicoles  
Water Media

Jan Nontell  
Ceramics & Enamel

Linda Shepherd  
Digital Art

Tanya Dee Oldenburg  
Mixed Media

Dalene Olson  
Sterling Silver Jewelry

Justin Page  
Photography

Ina Wagenman  
Mosaics



Of Southwest Washington

PO Box 1628, Centralia, WA 98531 [www.ARTrailsOfSWW.org](http://www.ARTrailsOfSWW.org)

### ARTrails of Southwest Washington

is a 501(c)3 nonprofit organization supporting a community of emerging and established artists who live and working greater Lewis County area. Through the annual open studio tour, ARTrails provides an opportunity for the public to meet artists in their studio/workplace and to observe work in progress. ARTrails promotes the arts and work of member artists through exhibits, workshops and educational programs in coordination with area businesses, schools, and organizations.

#### ARTrails Board of Directors

Carlene Salazar President  
Richard Roth  
Penny Auld  
Ina Wagenman  
JoAnne Watson  
Tonie Knutz  
Karla Baily  
Sheryl Harris  
Vernadel Peterson

#### Publicity

Kit Metlen, Chairman

#### Newsletter

Tonie Knutz, Design & Layout

#### Tour Guide

Joan Hitchcock

#### Membership

Penny Auld

#### Website

Madeline McIntire

#### Gallery setup

Mike Morgan